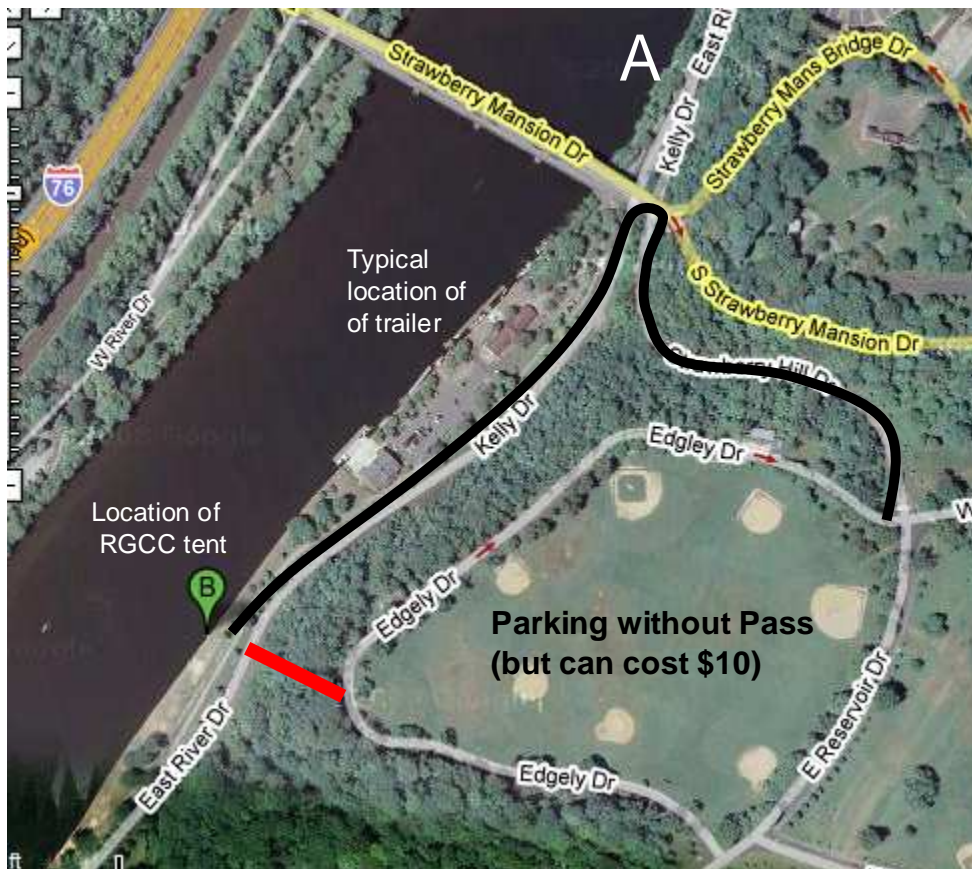


## Directions to the Schuylkill River

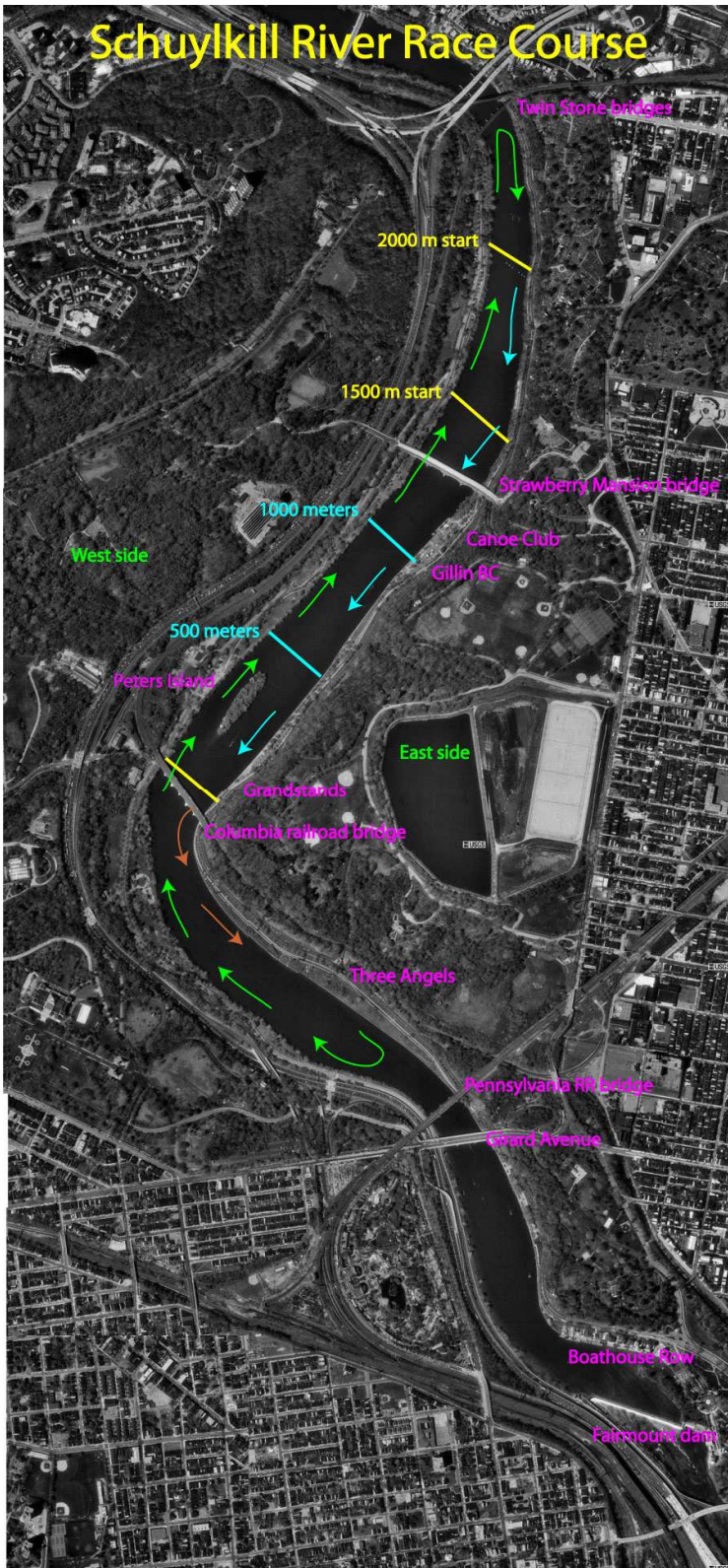
Typically the coaches will ask the girls to be on the river at the boat trailer 2 hours before the race starts. From Radnor, drive east on I-76 (the Schuylkill Expressway), taking exit 340A/Lincoln Drive to the left. Stay left on the bridge over the Schuylkill River, bearing left on the ramp toward City Avenue/Kelly Drive/East River Drive. Follow this road for about two miles until just north of the Strawberry Mansion Bridge (point A on the following map), where Kelly Drive will be blocked, and only those with parking permits are allowed through. This is the appropriate spot to allow athletes to quickly exit your vehicle. It is only a short walk to the trailer near the Canoe Club.



## Parking

Typically, from the drop-off point, you will drive up to your left (Strawberry Hill Drive) and park around the baseball fields on Edgley Drive. This can cost \$10. Often, spectators will bring bicycles to commute from their car to the hospitality tent and from the tent to the finish line quickly. When walking, you can either use the safer route back down Strawberry Hill Drive to Kelly Drive, the steeper but much shorter route down the dirt/gravel path at the corner of Reservoir and Edgley Drives (not marked on the map), or the VERY steep path at the southwestern corner of Edgley Drive (appropriately marked in red on the map). This latter route is the shortest route between off-course parking and the hospitality tent but is only recommended for those who can master the

steep hill and the fact that there is hardly any trail. Please be aware when trying to take this route that there are sheer drops that are not really visible from above. Ask an experienced parent to show you the way.



All new parents are encouraged to participate in the spring "dry run," when we'll take you down to the river to "show you the ropes."

As a member of the Philadelphia Scholastic Rowing Association (PSRA), the RGCC receives a limited number of parking permits, which allow access to and parking on the East River Drive during PSRA events. These permits are auctioned off to members as a fundraiser in the spring.

Please keep also in mind the always applicable "car safety" etiquette of no-visible valuables in the car as thefts have happened in the past.